

VEAC Investigations

Legend

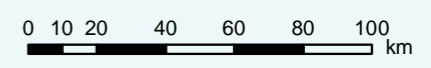
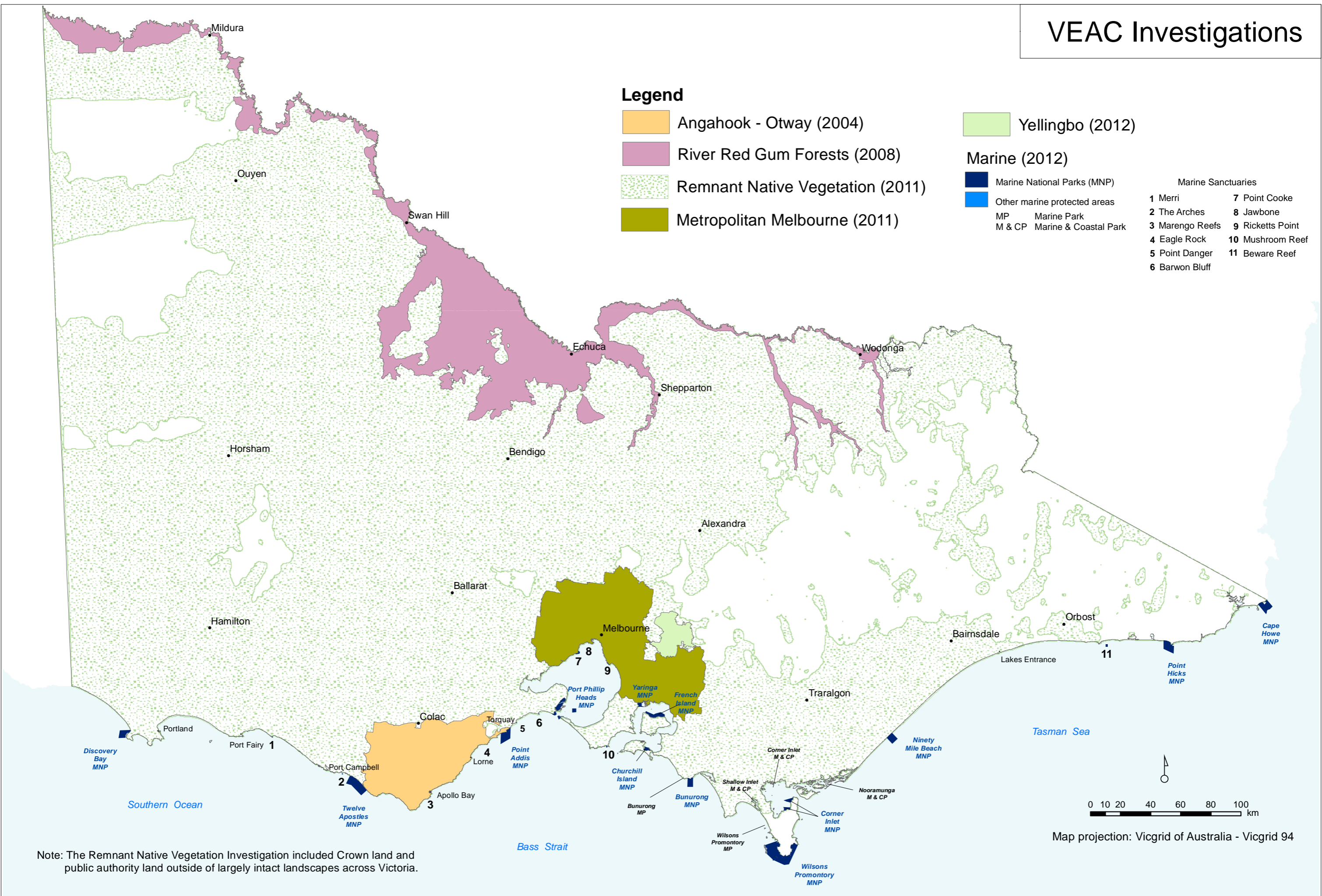
- Angahook - Otway (2004)
- River Red Gum Forests (2008)
- Remnant Native Vegetation (2011)
- Metropolitan Melbourne (2011)

Yellingbo (2012)

Marine (2012)

- Marine National Parks (MNP)
- Other marine protected areas
- MP Marine Park
- M & CP Marine & Coastal Park

- Marine Sanctuaries
- | | |
|-----------------|------------------|
| 1 Merri | 7 Point Cooke |
| 2 The Arches | 8 Jawbone |
| 3 Marengo Reefs | 9 Ricketts Point |
| 4 Eagle Rock | 10 Mushroom Reef |
| 5 Point Danger | 11 Beware Reef |
| 6 Barwon Bluff | |



Map projection: Vicgrid of Australia - Vicgrid 94

Note: The Remnant Native Vegetation Investigation included Crown land and public authority land outside of largely intact landscapes across Victoria.