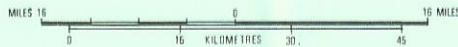
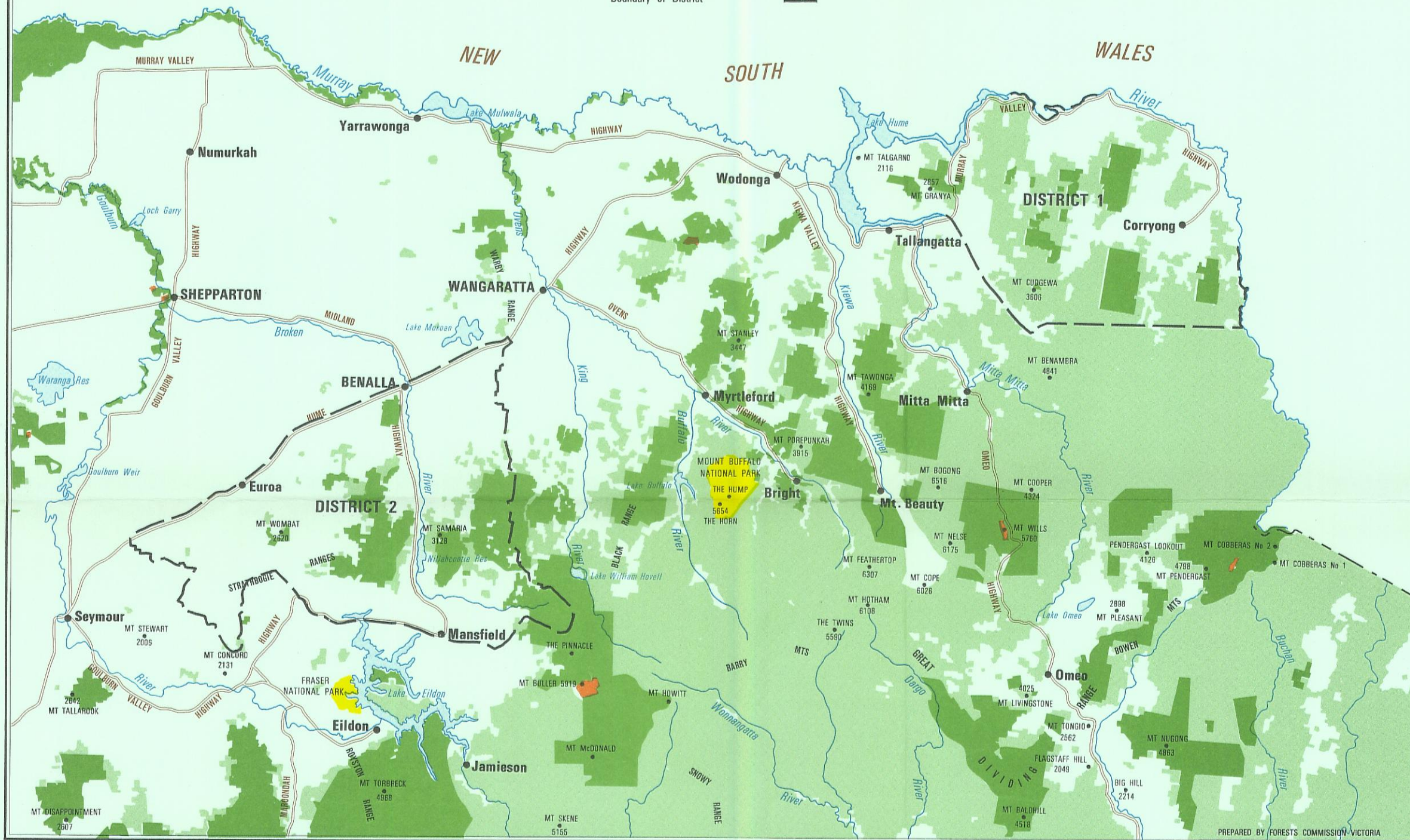


**LAND CONSERVATION COUNCIL**  
**DISTRICT 1 AND 2 OF THE NORTH EASTERN AREA**



Reserved Forest  
Forest Reserves  
Protected Forest (Unoccupied Crown Land)  
National Parks  
Boundary of District



PREPARED BY FORESTS COMMISSION VICTORIA