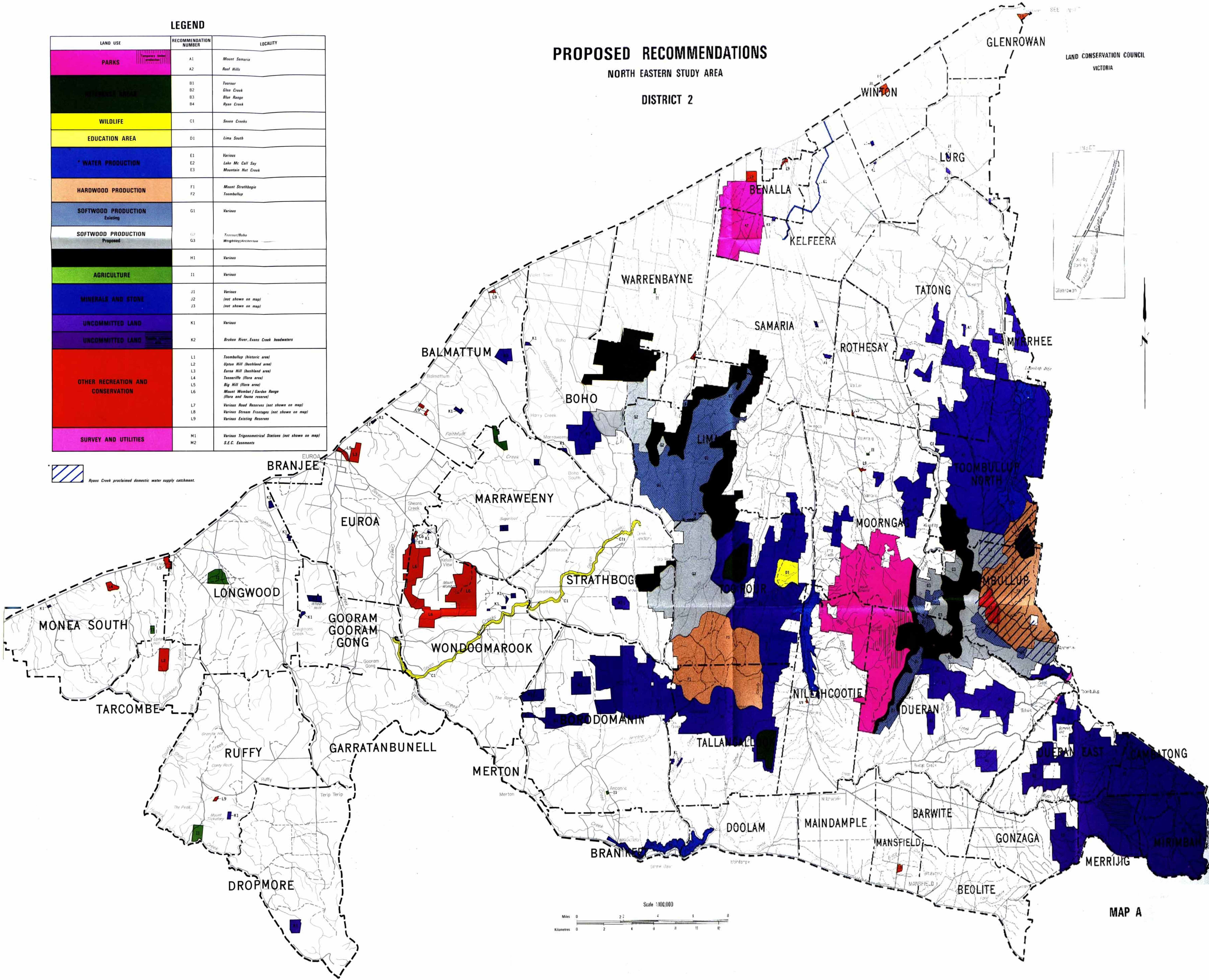


LEGEND

LAND USE	RECOMMENDATION NUMBER	LOCALITY
PARKS	A1	Mount Samaria
	A2	Reef Hills
	B1	Toorour
	B2	Glen Creek
WILDLIFE	B3	Blue Range
	B4	Ryan Creek
	C1	Seven Creeks
EDUCATION AREA	D1	Lima South
* WATER PRODUCTION	E1	Various
	E2	Lake Mc Call Say
	E3	Mountain Hut Creek
HARDWOOD PRODUCTION	F1	Mount Strathbogin
	F2	Toombullup
SOFTWOOD PRODUCTION Existing	G1	Various
SOFTWOOD PRODUCTION Proposed	G2	Toorour/Baha
	G3	Wrightsway/Arcerson
	H1	Various
AGRICULTURE	I1	Various
MINERALS AND STONE	J1	Various
	J2	(not shown on map)
	J3	(not shown on map)
UNCOMMITTED LAND	K1	Various
UNCOMMITTED LAND	K2	Broken River, Evans Creek headwaters
OTHER RECREATION AND CONSERVATION	L1	Toombullup (historic area)
	L2	Upton Hill (bushland area)
	L3	Euroa Hill (bushland area)
	L4	Tennerville (flora area)
	L5	Big Hill (flora area)
	L6	Mount Wombat / Garden Range (flora and fauna reserve)
	L7	Various Road Reserves (not shown on map)
	L8	Various Stream Frontages (not shown on map)
	L9	Various Existing Reserves
SURVEY AND UTILITIES	M1	Various Trigonometrical Stations (not shown on map)
	M2	S.E.C. Exemants

Ryan Creek proclaimed domestic water supply catchment.

PROPOSED RECOMMENDATIONS
NORTH EASTERN STUDY AREA
DISTRICT 2



LAND CONSERVATION COUNCIL
VICTORIA



MAP A