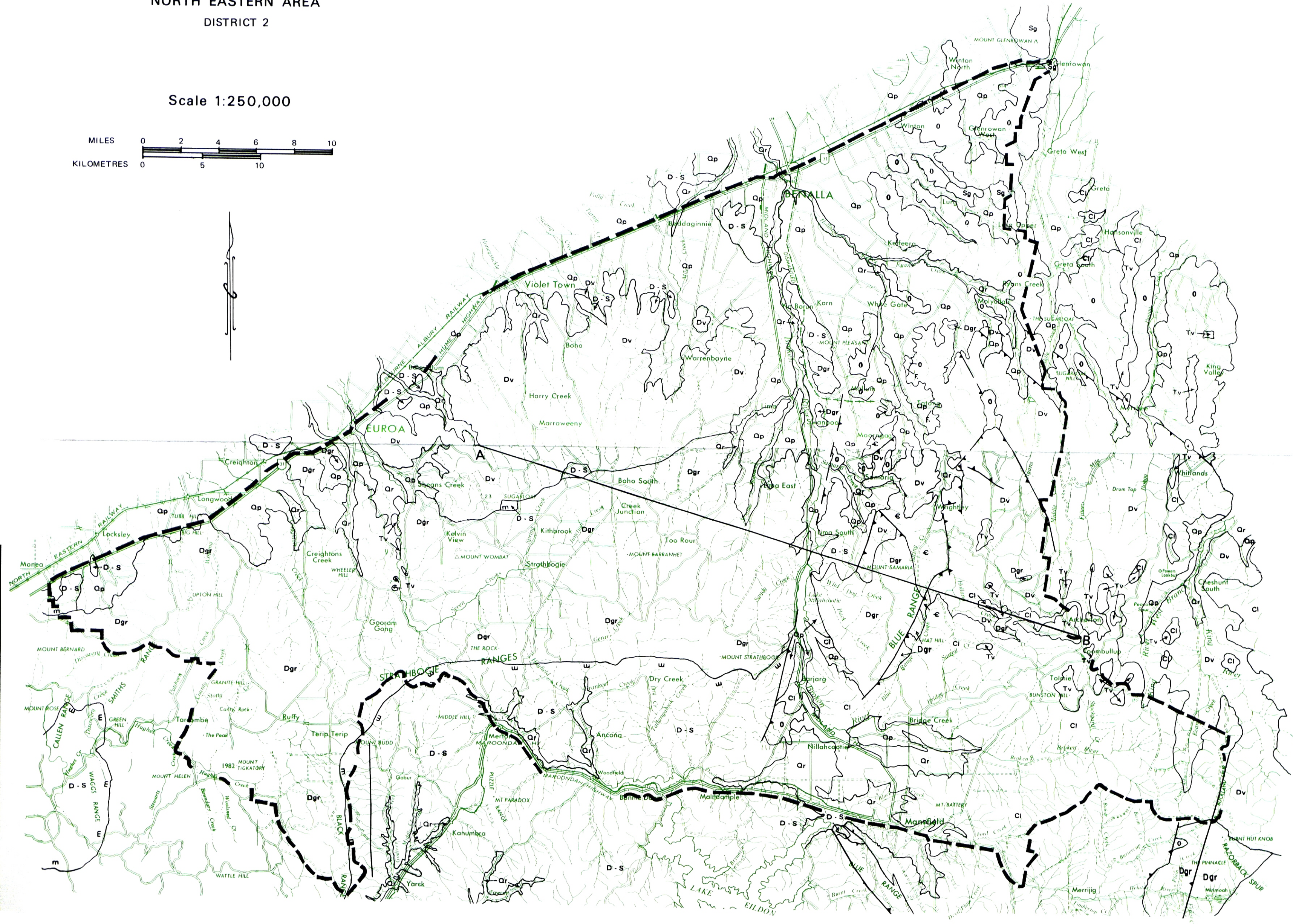
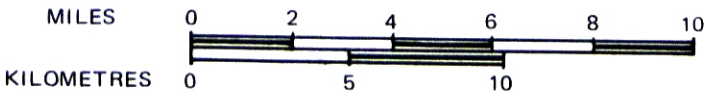
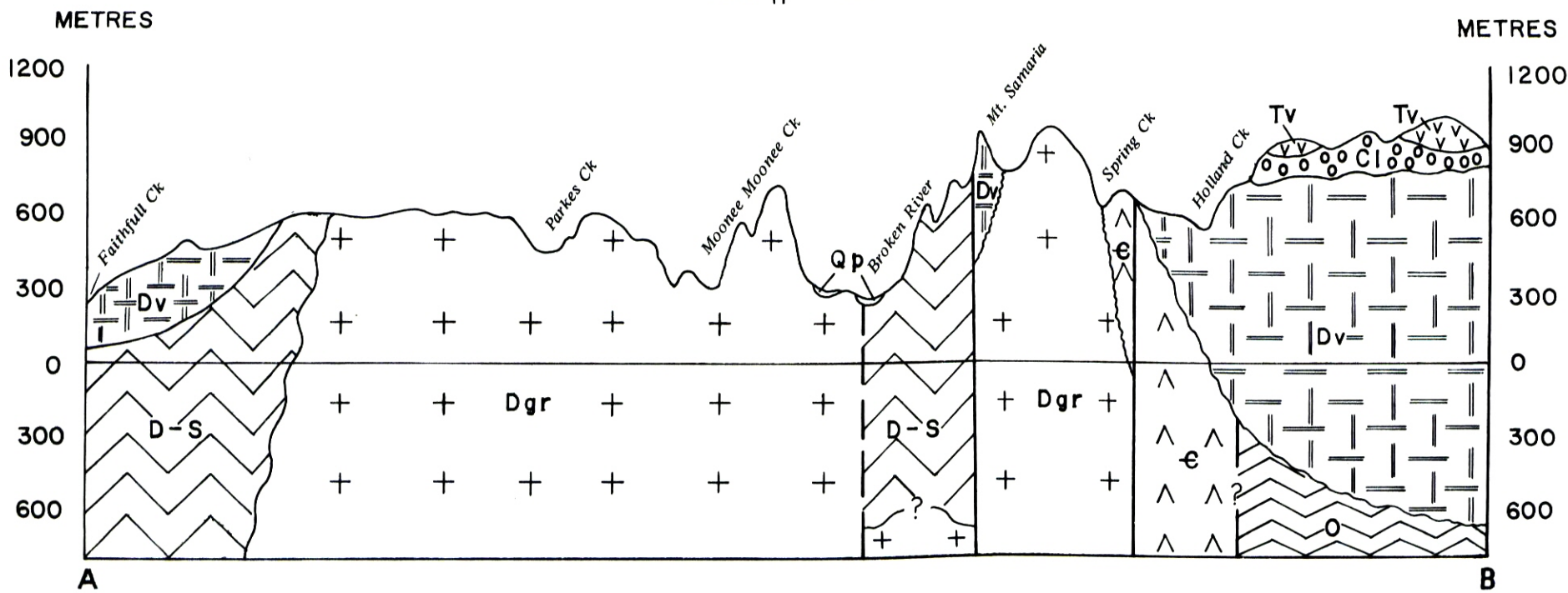


Scale 1:250,000



DIAGRAMMATIC SECTION

Scale  $\frac{V}{H} = 9.53$



Reference

DISTRICT BOUNDARY

Geological boundary

Fault

Fault showing direction of dip

Zone of contact metamorphism

Fossils

		SEDIMENTARY				IGNEOUS	
		Colluvial	Alluvial	Lacustrine	Marine	Extrusive	Intrusive
QUATERNARY	RECENT	Qr					
	PLEISTOCENE	Qp					
TERTIARY					Tv		
CARBONIFEROUS	LOWER	C					
DEVONIAN	UPPER				Dv	Dgr	
DEVONIAN — SILURIAN					D-S	Sg	
ORDOVICIAN					O		
CAMBRIAN					€		

Qr Alluvial flats, lake and swamp deposits; clay, silt, sand and gravel.  
Qp Plain, alluvial, lake and stream levee deposits; high river terraces and alluvial fans; clay, silt, sand, minor gravels and conglomerates.  
Tv Basalt, limburgite, and phonolite (?).  
Ci Conglomerate, red sandstone, siltstone and shale.  
Dgr Granite, adamellite, aplite; granodiorite porphyrite and hornblende porphyrite.  
Dv Rhyodacite, rhyolite; includes conglomerate and minor sediments.  
D-S Mudstone, siltstone and sandstone.  
Sg Granite.  
O Sandstone, siltstone, mudstone, shale and chert.  
€ Greenstone (diabase); tuff, chert, cherty shale.