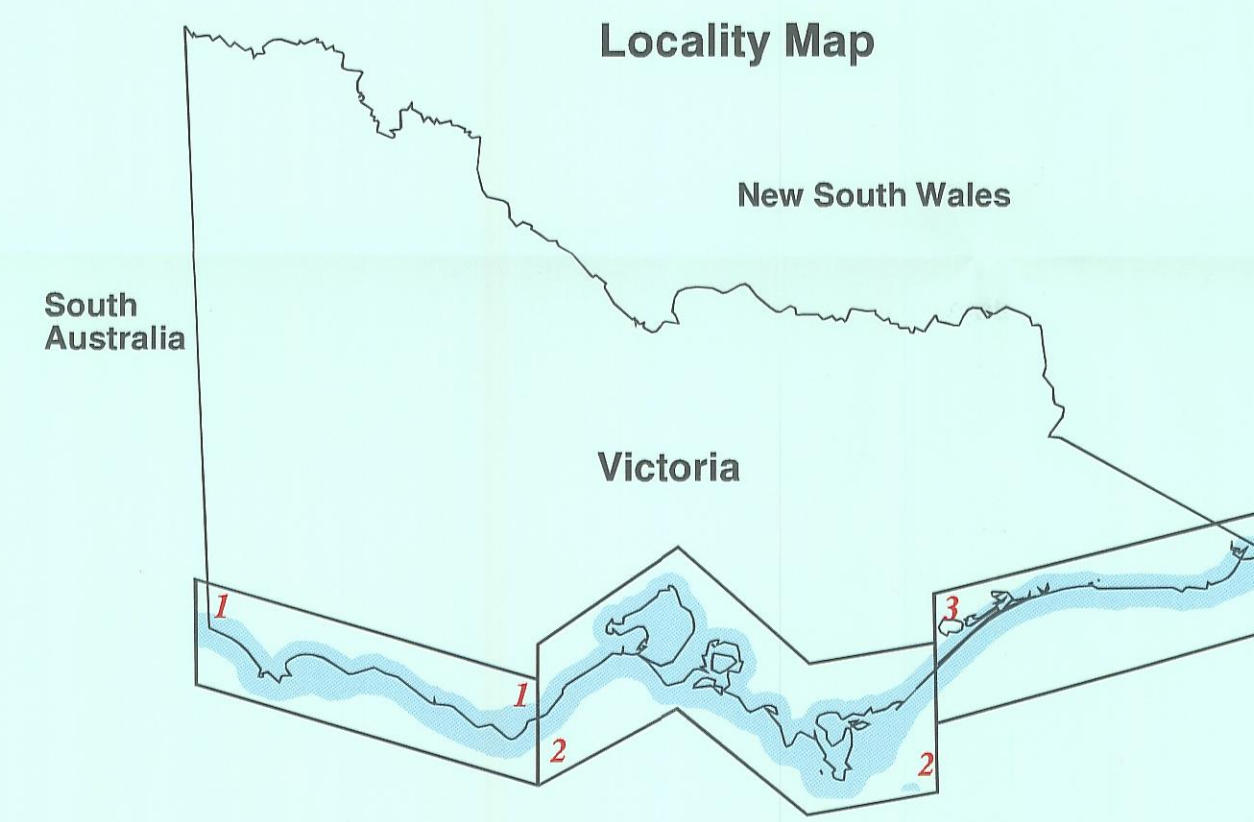
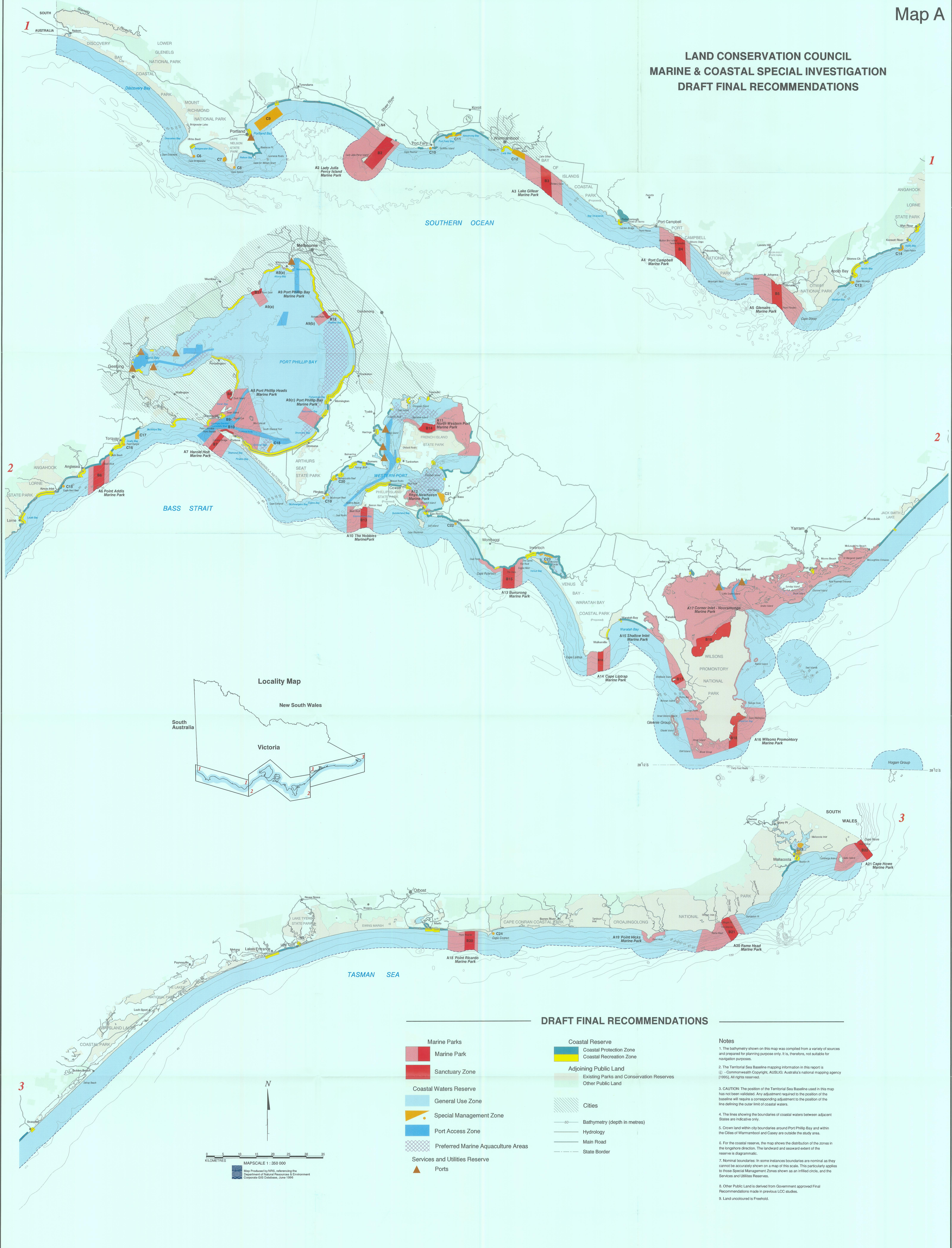


LAND CONSERVATION COUNCIL  
MARINE & COASTAL SPECIAL INVESTIGATION  
DRAFT FINAL RECOMMENDATIONS



DRAFT FINAL RECOMMENDATIONS

Marine Parks	Coastal Reserve
Sanctuary Zone	Coastal Recreation Zone
Coastal Waters Reserve	Adjoining Public Land
General Use Zone	Existing Parks and Conservation Reserves
Special Management Zone	Other Public Land
Port Access Zone	Cities
Preferred Marine Aquaculture Areas	Bathymetry (depth in metres)
Services and Utilities Reserve	Hydrology
Ports	Main Road
	State Border

- Notes**
1. The bathymetry shown on this map was compiled from a variety of sources and prepared for planning purposes only. It is, therefore, not suitable for navigation purposes.
  2. The Territorial Sea Baseline mapping information in this report is © Commonwealth Copyright, AUSLIG: Australia's national mapping agency (1998). All rights reserved.
  3. CAUTION: The position of the Territorial Sea Baseline used in this map has not been validated. Any adjustment required to the position of the baseline will require a corresponding adjustment to the position of the line defining the outer limit of coastal waters.
  4. The lines showing the boundaries of coastal waters between adjacent States are indicative only.
  5. Crown land within city boundaries around Port Phillip Bay and within the Cities of Warramboul and Casey are outside the study area.
  6. For the coastal reserve, the map shows the distribution of the zones in the longshore direction. The landward and seaward extent of the reserve is diagrammatic.
  7. Nominal boundaries. In some instances boundaries are nominal as they cannot be accurately shown on a map of this scale. This particularly applies to those Special Management Zones shown as an inflated circle, and the Services and Utilities Reserves.
  8. Other Public Land is derived from Government approved Final Recommendations made in previous LCC studies.
  9. Land uncoloured is Freehold.

MAPSCALE 1 : 350 000

Map Produced by IIRIS, referencing the Department of Natural Resources & Environment Corporate GIS Database, June 1998