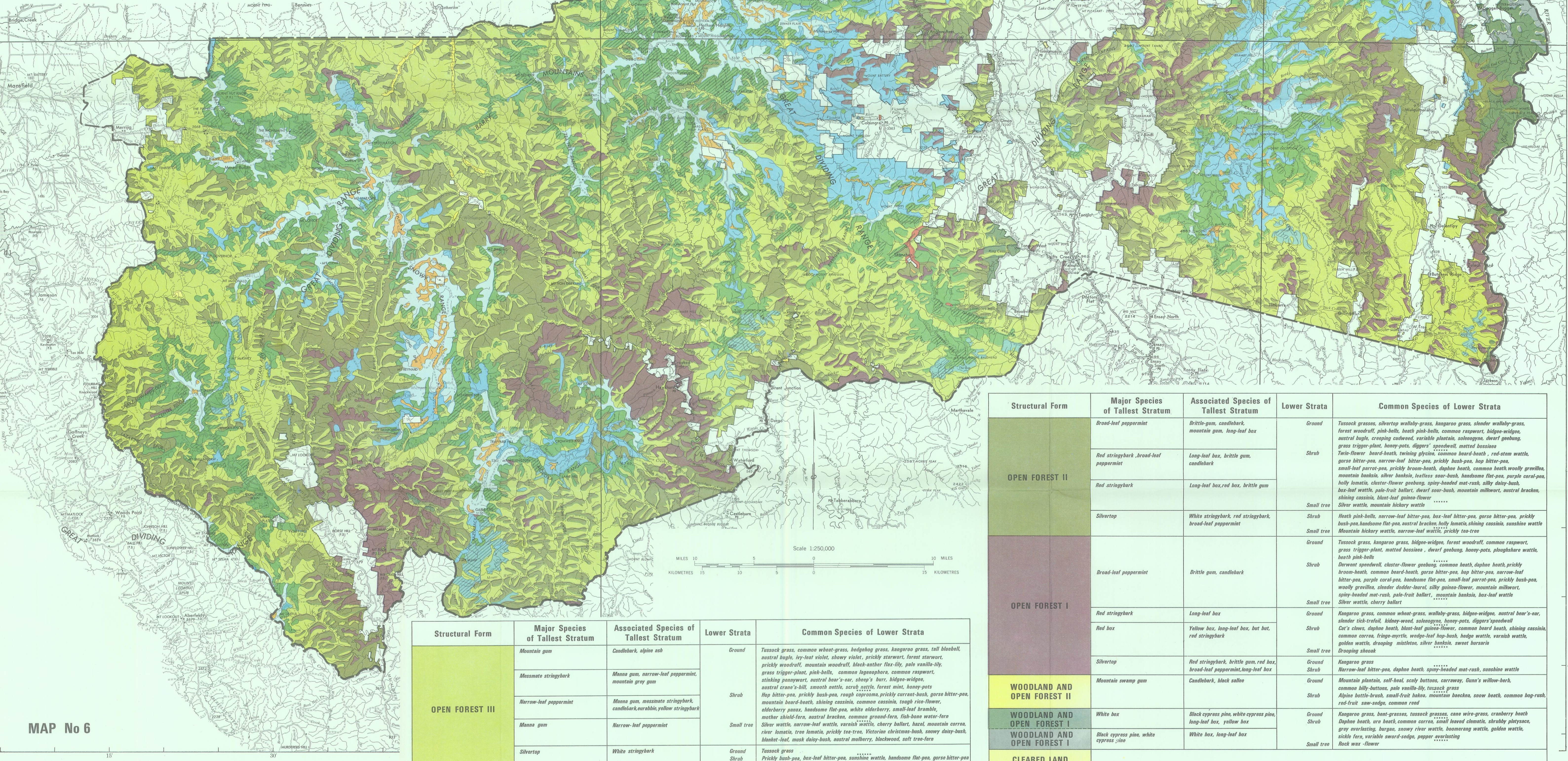


Structural Form	Major Species of Tallest Stratum	Associated Species of Tallest Stratum	Lower Strata	Common Species of Lower Strata
ALPINE AND SUB-ALPINE OPEN AREAS	Dwarf herbfield, heathland	<i>Silver ewaria, heavy sunray, snow heath</i>	<i>Twin flower heath, alpine stackhouse, carpet heath</i>	
	Short herbfield	<i>Alpine wallaby-grass, leafy daisy, white purslane</i>	<i>Sedge (Carex hebes), star plantain, alpine tuft-rush, brittle-grass</i>	Ground <i>Mud proto, mouse look-orchid, alpine marsh-marigold</i>
	Tall herbfield	<i>Silver daisy, orange everlasting, mountain gentian, snow grass, yam daisy, heavy sunray</i>	<i>Scaly buttone, Australian buttercup, variable groundsel, mountain woodruff, sedges, glacial eye bright, alpine podopsis, mountain plantain</i>	Ground <i>Ivy goodenia, silver cadweed, sky lily</i>
	Grassland	<i>Snow grass</i>	<i>Yam daisy, sedges (Carex hebes, C. brevicaulis), mountain woodruff</i>	Ground <i>Ivy-leaf violet</i>
	Dry heathland	<i>Alpine wattie, alpine weaveringie</i>	<i>Mountain needlewood, dagger wattie, small crowns, carpet heath</i>	Ground <i>Bulbine lily</i>
	Moist heathland	<i>Rusty pads, alpine grevillea, alpine oxylabium, alpine mint-bush, alpine phobolium, leafy bossiaea, myrtle tea-tree</i>	<i>Alpine arctis, tree violet, golden oxylabium, mountain plum-pine, alpine star-bush, tall rice-flower, alpine popper</i>	Ground <i>Silver daisy, snow grass, common raspwort, scaly buttone, grass trigger-plant, sky lily</i>
	Wet heathland	<i>Alpine heath, alpine bottle-brush, drumstick heath, alpine heath, swamp heath, myrtle tea-tree</i>	<i>Snow heath, yellow heath, small-fruit hakea, coral heath</i>	Ground <i>Crooping fan-flower, variable willow-herb, alpine water-fers</i>
	Mossland	<i>Sphagnum moss, candle heath, spreading rope-rush, alpine tuft-rush, fan tuft-rush</i>	<i>Alpine heath, mountain heath, alpine bottle-brush, coral heath</i>	Ground <i>Dog buttercup, dwarf buttercup, silver starling, alpine look-orchid, pale sundew, white purslane, Goss's willow-herb</i>
	Sedgeland	<i>Tall sedges, tall spike-rush, austral rush</i>	<i>Other sedges, rushes</i>	Ground <i>Mud proto</i>
SUB-ALPINE WOODLAND, SCRUBLAND AND OPEN FOREST I	<i>Snow gum (white sallee)</i>	<i>Black sallee, ash-mallee, spinning gum, mountain gum, candlebark</i>		Ground <i>Snow grass, slender tussock-grass, ivy-leaf violet, showy violet, granite buttercup, prickly starwort, mountain woodruff, bidges-widges, mountain corolla, Australian curraway, show daisy, glacial eyebright, heavy sunray, ivy goodenia, orange stracheyana, grass trigger-plant, variable groundsel, pale vanilla-lily, common billy-buttone, purple eyebright, common raspwort, slender rice-flower</i> Shrub <i>Alpine oxylabium, alpine phobolium, rusty pads, leafy bossiaea, alpine popper, alpine mint-bush, mountain beard-heath, rough coprosma, gorse bitter-pan, prickly bush-pan, mountain hickory wattle, dusty daisy-bush, silky daisy-bush, royal grevillea, tall rice-flower, derwent speedwell, elderberry panax, cascade everlasting, sticky everlasting, clustered everlasting, tasman flax-lily, mother shield-fern, common oxylabium, pink beard-heath, prickly brown-heath, honey-pots, dwarf geobum, guinea flower</i>
SUB-ALPINE TO MONTANE OPEN FOREST II	<i>Mountain gum, snow gum</i>	<i>Candlebark, broad-leaf peppermint</i>		Shrub <i>Common wheat-grass, common bog-rush, tall sedge, variable willow-herb, creeping culmweed, kidney weed, twin-flower heath, showy violet, scaly buttone, mountain plantain, bidges-widges, mountain woodruff, alpine water-fers, sedge, mountain corolla, ivy-leaf violet, stinking pennywort, common lupinophora, small-flower nut-rush, prickly starwort, grass trigger-plant, ivy-leaf goodenia, alpine stracheyana, heavy heath, mountain beard-heath, dusty daisy-bush, alpine oxylabium, common oxylabium, slender rice-flower, alpine popper, silver wattle, leafy bossiaea, small-fruit hakea, coral heath, mountain mid-bells</i> Small tree <i>Mountain tea-tree</i>
SUB-ALPINE WOODLAND TO OPEN FOREST I	<i>Black sallee</i>	<i>Mountain swamp gum</i>		Shrub <i>Snow grass, tussock grass, slender tussock grass, hedgehog grass, common wheat-grass, ivy-leaf violet, showy violet, prickly starwort, bidges-widges, common lupinophora, pale vanilla-lily, tasman flax-lily, scrub wattle, forest mint, hairy pennywort, Australian curraway, tall bluebell, royal bluebell, crane's bill, orange everlasting, rough coprosma, prickly current-bush, hop bitter-pan, mountain beard-heath, mountain popper, dusty daisy-bush, sticky everlasting, elderberry panax, common cassinia, derwent speedwell, prickly bush-pan, forest climatis, small-leaf bramble, mother shield-fern, fish-bone water-fers</i> Small tree <i>Silver wattle, tree lomatia, mountain hickory wattle, mountain correa, hazel, mountain tea-tree, soft tree-fern</i>
OPEN FOREST IV	<i>Alpine ash</i>	<i>Mountain gum</i>		Shrub <i>Giant mountain grass, prickly starwort, forest starwort, bidges-widges, forest pennywort, crane's bill, scrub nettie, shade nettie, rough coprosma, white elderberry, derwent speedwell, prickly bush-pan, Australian climatis, forest climatis, mother shield-fern, bat's wing-fern, hard water-fers, fish-bone water-fers, spreading fox-fern, silver wattle, tree lomatia, stinkwood, mountain correa, hazel, southern sassafras, musk daisy-bush, blanket-leaf, Victorian christmas-bush, soft tree-fern, rough tree-fern</i>
REGROWTH				
OPEN FOREST IV	<i>Shining gum, mountain ash</i>	<i>Manna gum, alpine ash</i>		Shrub <i>Giant mountain grass, prickly starwort, forest starwort, bidges-widges, forest pennywort, crane's bill, scrub nettie, shade nettie, rough coprosma, white elderberry, derwent speedwell, prickly bush-pan, Australian climatis, forest climatis, mother shield-fern, bat's wing-fern, hard water-fers, fish-bone water-fers, spreading fox-fern, silver wattle, tree lomatia, stinkwood, mountain correa, hazel, southern sassafras, musk daisy-bush, blanket-leaf, Victorian christmas-bush, soft tree-fern, rough tree-fern</i>
REGROWTH				

LAND CONSERVATION COUNCIL
VICTORIA
ALPINE STUDY AREA

VEGETATION

MAP No 6



MAP No 6

Structural Form	Major Species of Tallest Stratum	Associated Species of Tallest Stratum	Lower Strata	Common Species of Lower Strata
OPEN FOREST III	Mountain gum	Candlebark, alpine ash	Ground	Tussock grass, common wheat-grass, hedgehog grass, kangaroo grass, tall bluebell, austral bugle, ivy-leaf violet, showy violet, prickly starwort, forest starwort, prickly woodruff, mountain woodruff, black-anther flax-lily, pale vanilla-lily, grass trigger-plant, pink-bells, common lupinophora, common raspwort, stinking pennywort, austral bear's ear, sheep's burr, bidges-widges, austral crane's bill, smooth nettie, scrub nettie, forest mint, honey-pots
	Messmate stringybark		Shrub	Hop bitter-pan, prickly bush-pan, rough coprosma, prickly current-bush, gorse bitter-pan, mountain beard-heath, shining cassinia, common cassinia, rough rice-flower, elderberry panax, handsome flat-pan, white elderberry, small-leaf bramble, mother shield-fern, austral bracken, common ground-fern, fish-bone water-fers
	Narrow-leaf peppermint	Manna gum, messmate stringybark, candlebark, acacia, yellow stringybark	Small tree	Silver wattle, narrow-leaf wattle, varnish lilly, cherry ballart, hard, mountain correa, river lomatia, tree lomatia, prickly tea-tree, Victorian christmas-bush, snowy daisy-bush, blanket-leaf, musk daisy-bush, austral mulberry, blackwood, soft tree-fern
	Manna gum	Narrow-leaf peppermint		
	Silvertop	White stringybark	Ground Shrub Small tree	Tussock grass Prickly bush-pan, box-leaf bitter-pan, sunshine wattle, handsome flat-pan, gorse bitter-pan Mountain hickory wattle, cherry ballart

Structural Form	Major Species of Tallest Stratum	Associated Species of Tallest Stratum	Lower Strata	Common Species of Lower Strata
OPEN FOREST II	Broad-leaf peppermint	Brittle gum, candlebark, mountain gum, long-leaf box	Ground	Tussock grasses, silvertop wallaby-grass, kangaroo grass, slender wallaby-grass, forest woodruff, pink-bells, heath pink-bells, common raspwort, bidges-widges, austral bugle, creeping culmweed, variable plantain, silvery grass, dwarf geobum, grass trigger-plant, honey-pots, diggers' speedwell, mottled bossiaea
	Red stringybark, broad-leaf peppermint	Long-leaf box, brittle gum, candlebark	Shrub	Twin-flower beard-heath, twining glycine, common beard-heath, red-stem wattle, gorse bitter-pan, narrow-leaf bitter-pan, prickly bush-pan, hop bitter-pan, small-leaf parrot-pan, prickly brown-heath, daphne heath, common heath, woolly grevillea, mountain hakea, silver hakea, leafless sour-bush, handsome flat-pan, purple coral-pan, holly lomatia, cluster-flower geobum, spiny-headed nut-rush, silky daisy-bush, box-leaf wattle, pale-fruit ballart, dwarf sour-bush, mountain milkwort, austral bracken, shining cassinia, blunt-leaf guinea-flower
	Red stringybark	Long-leaf box, red box, brittle gum	Small tree	Silver wattle, mountain hickory wattle
	Silvertop	White stringybark, red stringybark, broad-leaf peppermint	Shrub	Heath pink-bells, narrow-leaf bitter-pan, box-leaf bitter-pan, gorse bitter-pan, prickly bush-pan, handsome flat-pan, austral bracken, holly lomatia, shining cassinia, sunshine wattle, mountain hickory wattle, narrow-leaf wattle, prickly tea-tree
OPEN FOREST I	Broad-leaf peppermint	Brittle gum, candlebark	Ground	Tussock grass, kangaroo grass, bidges-widges, forest woodruff, common raspwort, grass trigger-plant, mottled bossiaea, dwarf geobum, honey-pots, ploughshare wattle, heath pink-bells
	Red stringybark	Long-leaf box	Shrub	Derwent speedwell, cluster-flower geobum, common heath, daphne heath, prickly brown-heath, common beard-heath, gorse bitter-pan, hop bitter-pan, narrow-leaf bitter-pan, purple coral-pan, handsome flat-pan, small-leaf parrot-pan, prickly bush-pan, woolly grevillea, slender dodder-leaved, silky guinea-flower, mountain milkwort, spiny-headed nut-rush, pale-fruit ballart, mountain hakea, box-leaf wattle, silver wattle, cherry ballart
	Red box	Yellow box, long-leaf box, bat but, red stringybark	Ground	Kangaroo grass, common wheat-grass, wallaby-grass, bidges-widges, austral bear's ear, slender tick-leafed, kidney-weed, silvery grass, diggers' speedwell
	Silvertop	Red stringybark, brittle gum, red box, broad-leaf peppermint, long-leaf box	Small tree	Cat's claws, daphne heath, blunt-leaf guinea-flower, common beard heath, shining cassinia, common correa, drupe-myrtle, wedge-leaf hop-bush, hedge wattle, varnish wattle, guinea wattle, drooping mistletoe, silver bark, sweet bursaria
WOODLAND AND OPEN FOREST II	Mountain swamp gum	Candlebark, black sallee	Ground	Kangaroo grass, kangaroo grass, wallaby-grass, bidges-widges, forest woodruff, common raspwort, grass trigger-plant, mottled bossiaea, dwarf geobum, honey-pots, ploughshare wattle, heath pink-bells
			Shrub	Derwent speedwell, cluster-flower geobum, common heath, daphne heath, prickly brown-heath, common beard-heath, gorse bitter-pan, hop bitter-pan, narrow-leaf bitter-pan, purple coral-pan, handsome flat-pan, small-leaf parrot-pan, prickly bush-pan, woolly grevillea, slender dodder-leaved, silky guinea-flower, mountain milkwort, spiny-headed nut-rush, pale-fruit ballart, mountain hakea, box-leaf wattle, silver wattle, cherry ballart
WOODLAND AND OPEN FOREST I	White box	Black cypress pine, white cypress pine, long-leaf box, yellow box	Ground	Kangaroo grass, kangaroo grass, wallaby-grass, bidges-widges, forest woodruff, common raspwort, grass trigger-plant, mottled bossiaea, dwarf geobum, honey-pots, ploughshare wattle, heath pink-bells
WOODLAND AND OPEN FOREST I	Black cypress pine, white cypress pine	White box, long-leaf box	Shrub	Daphne heath, ure heath, common correa, small hawd climatis, shrubby playfane, grey everlasting, burgee, snowy river wattle, bonemang wattle, golden wattle, sickle fern, variable sword-sedge, popper everlasting
CLEARED LAND			Small tree	Rock was-flower