

GEOLOGY, MINERALS & STONE

Wimmera Area

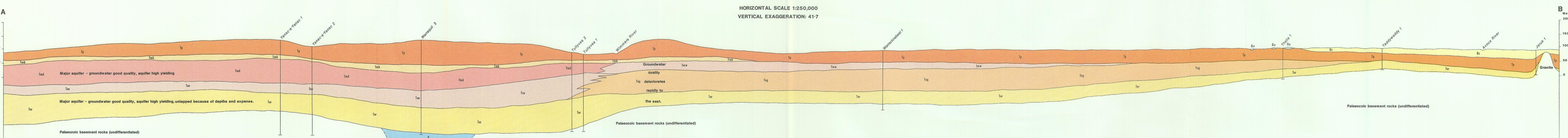
1:250 000

Land Conservation Council
Victoria

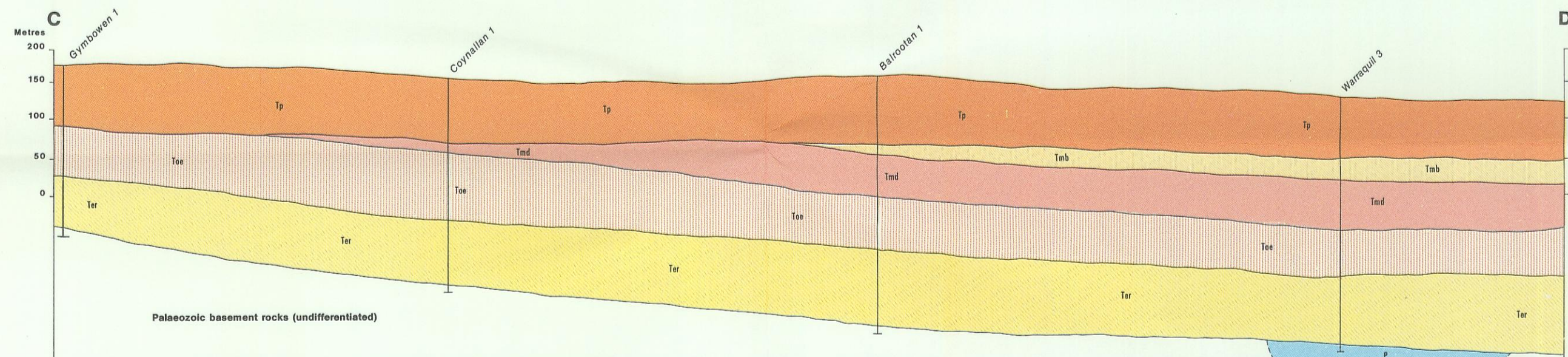
© Crown State of Victoria Copyright 1984. Base map reproduced by permission of the Director, Division of National Mapping, Department of National Development and Energy.

Grey numbered gridlines are 10 000 metre intervals on the Australian Map Grid, zone 54. Grid values are shown in full only at the south-west corner of the map.

SECTION A-B
HORIZONTAL SCALE 1:250 000
VERTICAL EXAGGERATION: 41:7



SECTION C-D
HORIZONTAL SCALE 1:250 000
VERTICAL EXAGGERATION: 41:7

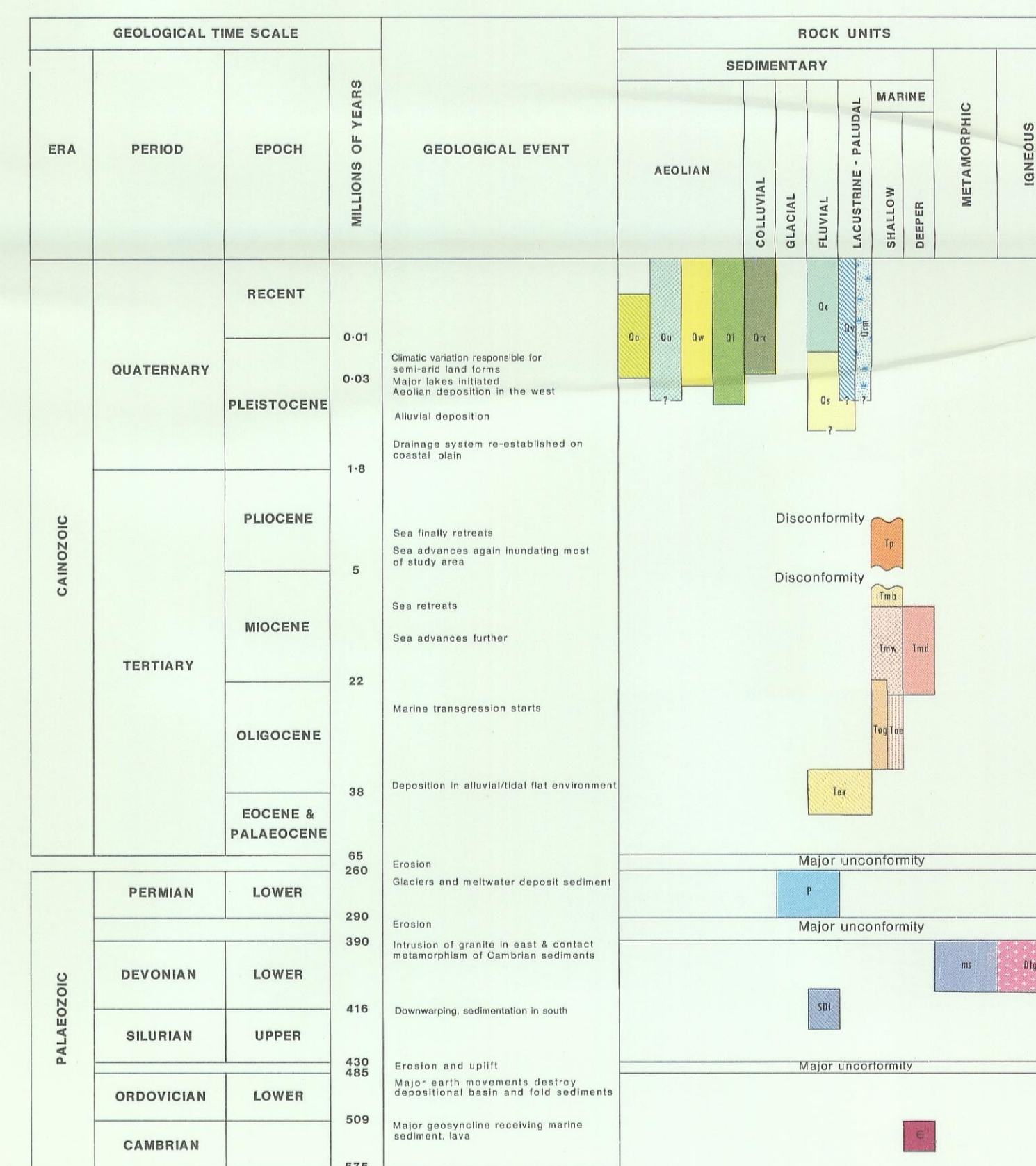


LEGEND

- Geological boundary
- Fault inferred
- Au Gold
- Gy Gypsum
- Na Salt
- Water bore
- Radiometric age in million years (K/Ar method)
- MLP Mining lease on public land
- ML Mining lease on private land
- SL Salt harvesting licence on public land
- EL Extractive industries lease on public land
- ELIC Extractive industries licence on private land
- S Licenced sand operation on public land
- SD Sandstone, gravel on public land
- Study area boundary
- City, town or borough boundary

Key to 1:250 000 geological maps published by Geological Survey of Victoria

Ouyen S1 54-16	Swan Hill S1 54-16
Horsesham S1 54-3	St Arnaud S1 54-4



- Coonambidgal Formation: Si Clay, sand, and sandy clay with slight soil development; silty deposits, often a grey clay, lenses with silt or siltstone or plates with a network of channels.
- Yamba Formation: Si Clay, sand, and sandy clay with slight soil development; silty deposits, often a grey clay, lenses with silt or siltstone or plates with a network of channels.
- Lowland Sand: Si Clay, sand, and sandy clay with slight soil development; silty deposits, often a grey clay, lenses with silt or siltstone or plates with a network of channels.
- Woorham Formation: Si Clay, sand, and sandy clay with slight soil development; silty deposits, often a grey clay, lenses with silt or siltstone or plates with a network of channels.
- Shepparton Formation: Si Clay, sand, and sandy clay with slight soil development; silty deposits, often a grey clay, lenses with silt or siltstone or plates with a network of channels.
- Purill Sand: Si Clay, sand, and sandy clay with slight soil development; silty deposits, often a grey clay, lenses with silt or siltstone or plates with a network of channels.
- Boonpumpum Beds: Si Clay, sand, and sandy clay with slight soil development; silty deposits, often a grey clay, lenses with silt or siltstone or plates with a network of channels.
- Duddo Limestone: Si Clay, sand, and sandy clay with slight soil development; silty deposits, often a grey clay, lenses with silt or siltstone or plates with a network of channels.
- Winnambol Formation: Si Clay, sand, and sandy clay with slight soil development; silty deposits, often a grey clay, lenses with silt or siltstone or plates with a network of channels.
- Elrick Marl: Si Clay, sand, and sandy clay with slight soil development; silty deposits, often a grey clay, lenses with silt or siltstone or plates with a network of channels.
- Geers Clay: Si Clay, sand, and sandy clay with slight soil development; silty deposits, often a grey clay, lenses with silt or siltstone or plates with a network of channels.
- Remark Group: Si Clay, sand, and sandy clay with slight soil development; silty deposits, often a grey clay, lenses with silt or siltstone or plates with a network of channels.
- Granite: Si Clay, sand, and sandy clay with slight soil development; silty deposits, often a grey clay, lenses with silt or siltstone or plates with a network of channels.
- Quartzite: Si Clay, sand, and sandy clay with slight soil development; silty deposits, often a grey clay, lenses with silt or siltstone or plates with a network of channels.