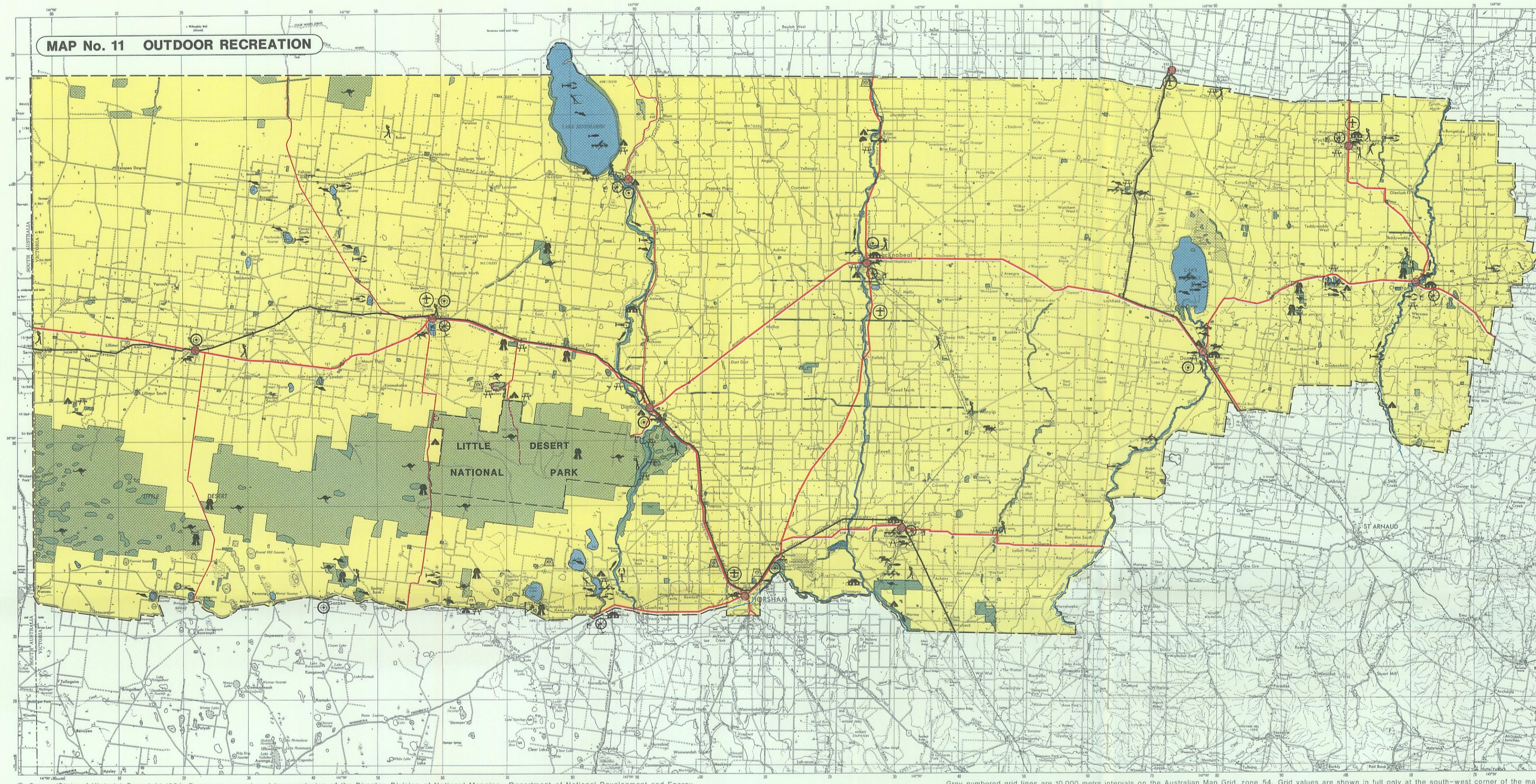


MAP No. 11 OUTDOOR RECREATION



© Crown (State of Victoria) Copyright 1984. Base map reproduced by permission of the Director, Division of National Mapping, Department of National Development and Energy.

Grey numbered grid lines are 10,000 metre intervals on the Australian Map Grid, zone 54. Grid values are shown in full only at the south-west corner of the map.

# OUTDOOR RECREATION

## Wimmera Area

1:500 000

0 10 20 40  
Kilometres

Land Conservation Council  
Victoria

### LEGEND

#### ENVIRONMENTS

- Woodland
- Scrub
- Agricultural land
- Lakes and swamps (permanent)
- Urban localities

#### NATURAL FEATURES

- Lookout
- Rock climbing
- Popular wildflower viewing area
- Wildlife
- Fishing stream; lake
- Yabbies
- Waterfowl (hunting)
- Boating (power)
- Boating (non power)

#### HISTORIC FEATURES

- Early mining locality
- Historic marker
- Museum
- Historic building (classified by the National Trust)

#### FACILITIES

- Picnic area
- Camping area
- Racecourse
- Golf course
- Rifle range or pistol club
- Orienteering
- Motor cycle and go-kart track
- Aerodrome
- Community parkland

#### OTHER

- Study area boundary
- City, town or borough boundary
- Public land (NOTE: Many small areas of public land are not shown)

#### ACCESS

- Major highway
- Railway - passenger service
- Major tourist road
- Popular walking track