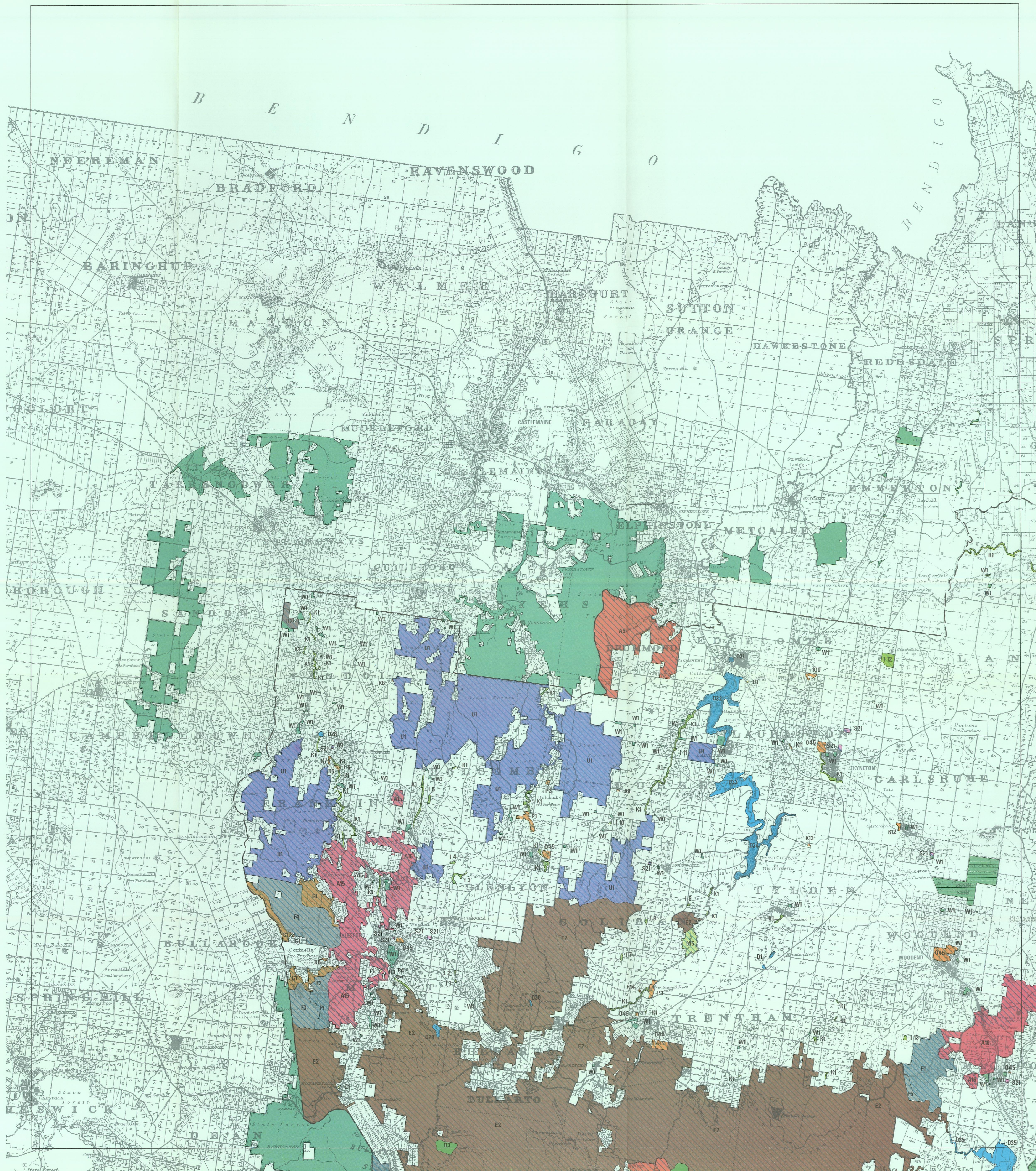
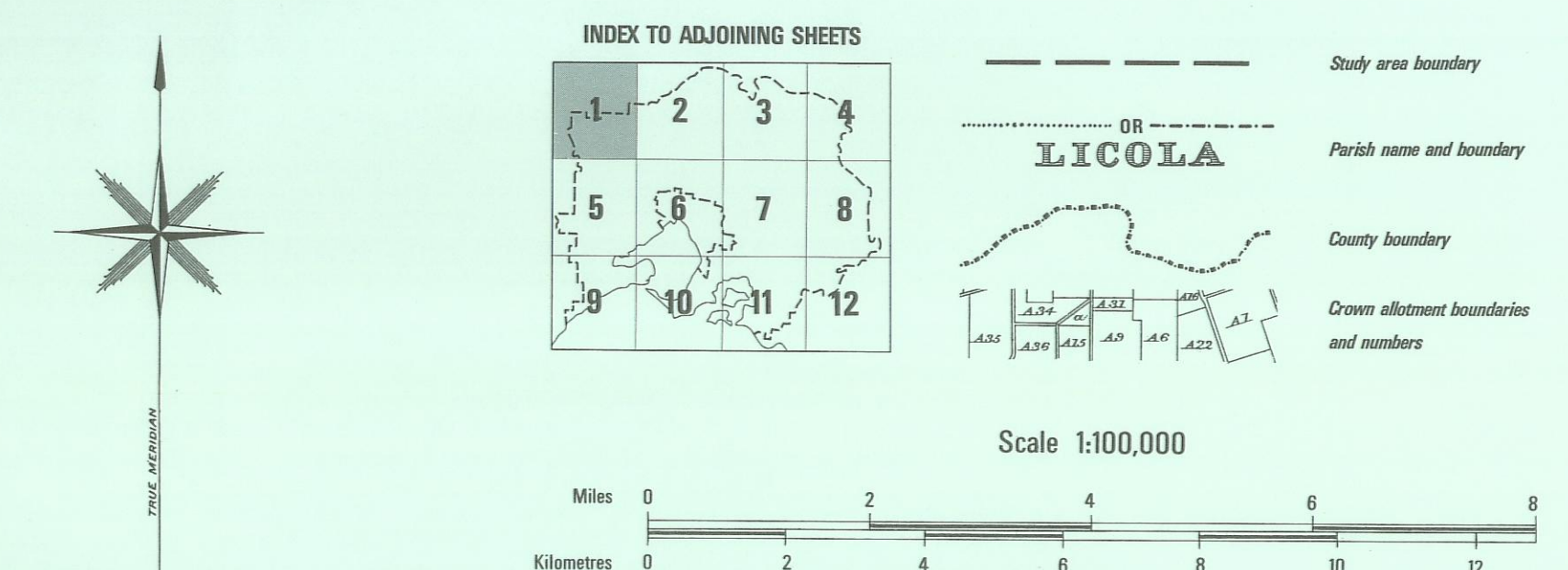


MELBOURNE STUDY AREA



NATIONAL PARK		A1 Row Bay					
STATE PARKS	A2	Angoonok	A6	Kinglake	A10	Moodarra	
	A3	Bribane Ranges	A7	Cathedral Range	A11	Brayby	
	A4	Lerdorfeg	A8	Lake Mountain	A12	French Island	
	A5	Tyres Ridge	A9	Eldon			
REGIONAL PARKS	A13	Yan Yanga	A18	Yea River	A23	Perrivore Gully	
	A14	Shingle	A19	Frazer	A24	Bardongage	
	A15	Hepburn	A20	Tyers	A25	Gambusk	
	A16	Maccedon (Map I)	A21	Crosswar	A26	Warrandyne	
	A17	Wendong	A22	Mount Werth	A27	Cape Schanck-Arthur Seat	
GEOLOGICAL MONUMENT		A28 Ogden Pipes					
HISTORIC AREAS		N1 Wallulla		N2 Bungal			
MULTI-PURPOSE PARK		A29 Yerra Valley (Map G)					
REFERENCE AREAS	B1	Duridwewarab	B9	Joy Creek	B17	Diamond creek	
	B2	Sony Creek	B10	Yan Yean (north)	B18	Hawdham Creek	
	B3	Heath Gully	B11	Yan Yean (south)	B19	Row Bay	
	B4	Rotha Gully	B12	Watts River	B20	Engelhawk Creek	
	B5	Al Kowes Gully	B13	Deep Creek	B21	French Island (north)	
	B6	Pyrene Range	B14	Welch Creek	B22	French Island (east)	
	B7	Sony Creek	B15	Mount Gregory			
	B8	Disappointment	B16	Bennie Creek			
WILDLIFE RESERVES	C1	Brownas Swamp	C8	Serendip	C15	Phillip Island (inland)	
	C2	Lake Connawarre	C9	Freshwater Swamp	C16	Arllyl Swamp	
	C3	Lonsdale Lakes	C10	Hornwood	C17	Seal Rocks	
	C4	Swan Bay-Edwards Point	C11	Melkeworth	C18	Phillip Island (coastal)	
	C5	Med Islands	C12	Snob-Creek	C19	Newhaven Swamp	
	C6	St Leonardas	C13	Yelligloo	C20	Reef Island-Bass River	
	C7	The Split	C14	Western Port			
WILDLIFE MANAGEMENT CO-OPERATIVE AREAS	C21	Swan Bay	C24	Point Lonsdale	C27	Arllyl-Newhaven	
	C22	Med Islands	C25	Point Nepean	C28	Reef Island-Bass River	
	C23	Popeas Eye Annulus	C26	Western Port			
FLORA RESERVES		H1-H19 Various					
FLORA AND FAUNA RESERVES		H20-H26 Various					
WATER PRODUCTION		D1-D103 Various					
HARDWOOD PRODUCTION	E1	Bungel Forest	E7	Murrindindi Forest	E13	Tangee-Latrobe Forest	
	E2	Wombat Forest	E8	Black Range Forest	E14	Revine East Forest	
	E3	Cobaw Forest	E9	Marysville Forest	E15	Tanjil-Tyers Forest	
	E4	Tallbreack Forest	E10	Robeco Forest	E16	Boole Boole Forest	
	E5	Mount Disappointment Forest	E11	Dip River Forest			
	E6	Tootlang Forest	E12	Thomson Forest			
	E12	(part) Thomson Forest					
		Special Management for Hardwood and Wildlife					
		Existing Plantations	F1	Various			
	SOFTWOOD PRODUCTION	F2-F5	Ballarat zone				
F6-F13		Central and Benalla/Mansfield zones					
F14-F16		Latrobe zone					
FOREST AREA		G1 Various					
COASTS	J1	Lorne to Queenscliff	J2	Port Phillip Bay	J3	Flinders to Heales Inlet, Phillip Island, and Watsons Inlet to Cape Patterson	
	J4	Heales Inlet to Watsons Inlet					
	J5	Lorne to Point Roadnight	J6	Point Addis to Bulls Beach	J7	Point Nepean to West Head, Flinders	
	J8	Griffith Point, San Remo to Black Head, Kilcunda					
EDUCATION AREAS	M1	Emuvalle	M7	Kinglake West	M13	Finniss South	
	M2	Oxton Grove Nature Reserve	M8	Kinglake	M14	Tanjil	
	M3	Meredith	M9	Andrew Hill	M15	Boggy Creek	
	M4	Kojimaup	M10	Castelle			
	M5	Tylden South	M11	Tonimbuk			
	M6	Mount Pigeon	M12	Cressover			
BUSHLAND RESERVES		I 1-I 105 Various					
PUBLIC LAND WATER FRONTAGE RESERVES		K1 Various		NOTE: Public land water frontage reserves cannot be accurately defined at this mapping scale. Refer to the appropriate parish plan to determine the boundaries of the reserve and whether the reserve is on one side, or both sides, of the stream.			
STREAMSIDE RESERVES		K5-K49 Various					
HIGHWAY PARK		L2 Marcondah Highway, between Yeack and Merton					
RECREATION	O4	French Island Youth and Family Camp	O8 - O42	Now Recreation Reserves	O45	Bannockburn	
	O7	Raw Raw Alpine Resort (Map E)	O43	Inverleigh	O44	Existing Recreation Reserves	
SCENIC RESERVES		P1-P8 Various					
AGRICULTURE	Q1	Various	Q2	S.E.C. land			
	Q3	Werribee	Q5	Tootlang	Q7	Elinbank	
	Q4	Westmeadows	Q6	Frankston			
TOWNSHIP LAND		T1	Various	T2	S.E.C. land	T3	Wallulla
MINERALS AND STONE		R2-R24 Various		R25-R26		Alcoa Lesse Area (brown coat), Angleside (Map I)	
UTILITIES AND SURVEY	S1	Existing powerlines	S13	Werthebe sewerage farm	S19	Watsons Port	
	S4-S8	Various garbage tips	S14-S16	Various Aquifers	S21	Various existing utilities	
	S12	Possible future power stations	S17	Social welfare, Sunbury			
UNCOMMITTED		U1 Various		U2 Yan Yean system		U3 S.E.C. land	
OTHER RESERVES AND PUBLIC LAND		W1 Various					
		Commonwealth land (not "public land" as defined in the Land Conservation Act 1970)					
		Public land (as defined in the Land Conservation Act 1970) which is outside the Melbourne Study Area in adjoining areas					
		Public land in catchments supplying water for industrial, domestic, or irrigation use					



NOTE: THE BASE FOR THIS MAP IS A COMPOSITE OF COUNTY PLANS AND THE EDGES OF ADJOINING SHEETS MAY NOT FIT EXACTLY. PARTICULARLY IN MOUNTAIN AREAS, TOPOGRAPHIC INFORMATION ON THE BASE MAY BE INACCURATE.

NOVEMBER 1976