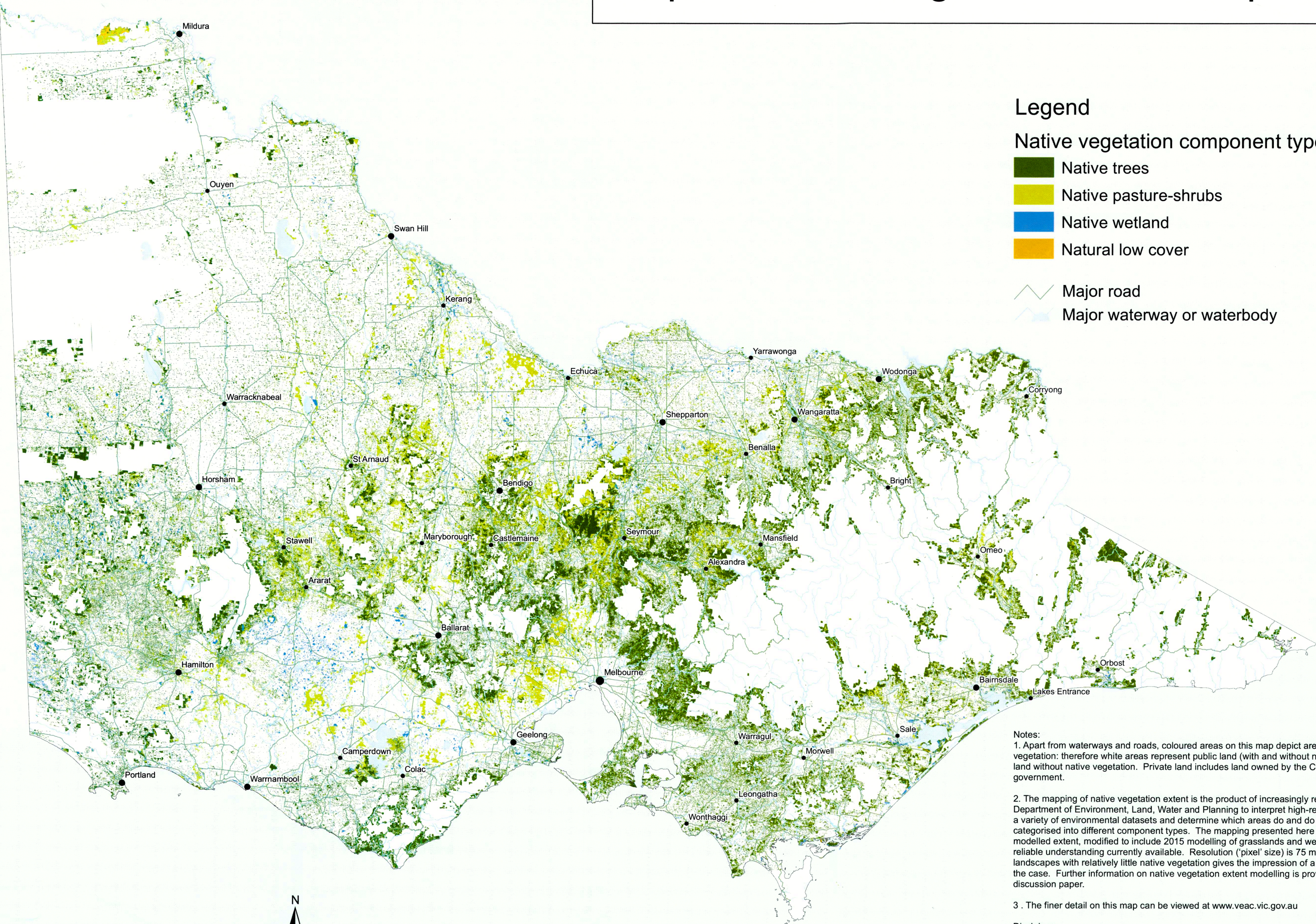


# Map G: Native vegetation extent - private land



## Legend

### Native vegetation component type

- Native trees
- Native pasture-shrubs
- Native wetland
- Natural low cover

- Major road
- Major waterway or waterbody

- Notes:
1. Apart from waterways and roads, coloured areas on this map depict areas of private land with native vegetation: therefore white areas represent public land (with and without native vegetation) and private land without native vegetation. Private land includes land owned by the Commonwealth and local government.
  2. The mapping of native vegetation extent is the product of increasingly refined modelling by the Department of Environment, Land, Water and Planning to interpret high-resolution satellite imagery and a variety of environmental datasets and determine which areas do and do not support native vegetation, categorised into different component types. The mapping presented here is derived from the 2010 modelled extent, modified to include 2015 modelling of grasslands and wetlands to produce the most reliable understanding currently available. Resolution ('pixel' size) is 75 metres by 75 metres which, in landscapes with relatively little native vegetation gives the impression of a greater extent than is actually the case. Further information on native vegetation extent modelling is provided in chapter 5 of the discussion paper.
  3. The finer detail on this map can be viewed at [www.veac.vic.gov.au](http://www.veac.vic.gov.au)

Disclaimer:  
This map may be of assistance to you but the State of Victoria and its employees do not guarantee that the map is without flaw of any kind or is wholly appropriate for your particular purpose and therefore disclaims all liability for any error, loss or any consequence which may arise from you relying on any information on this map.

© The State of Victoria, Victorian Environmental Assessment Council 2016