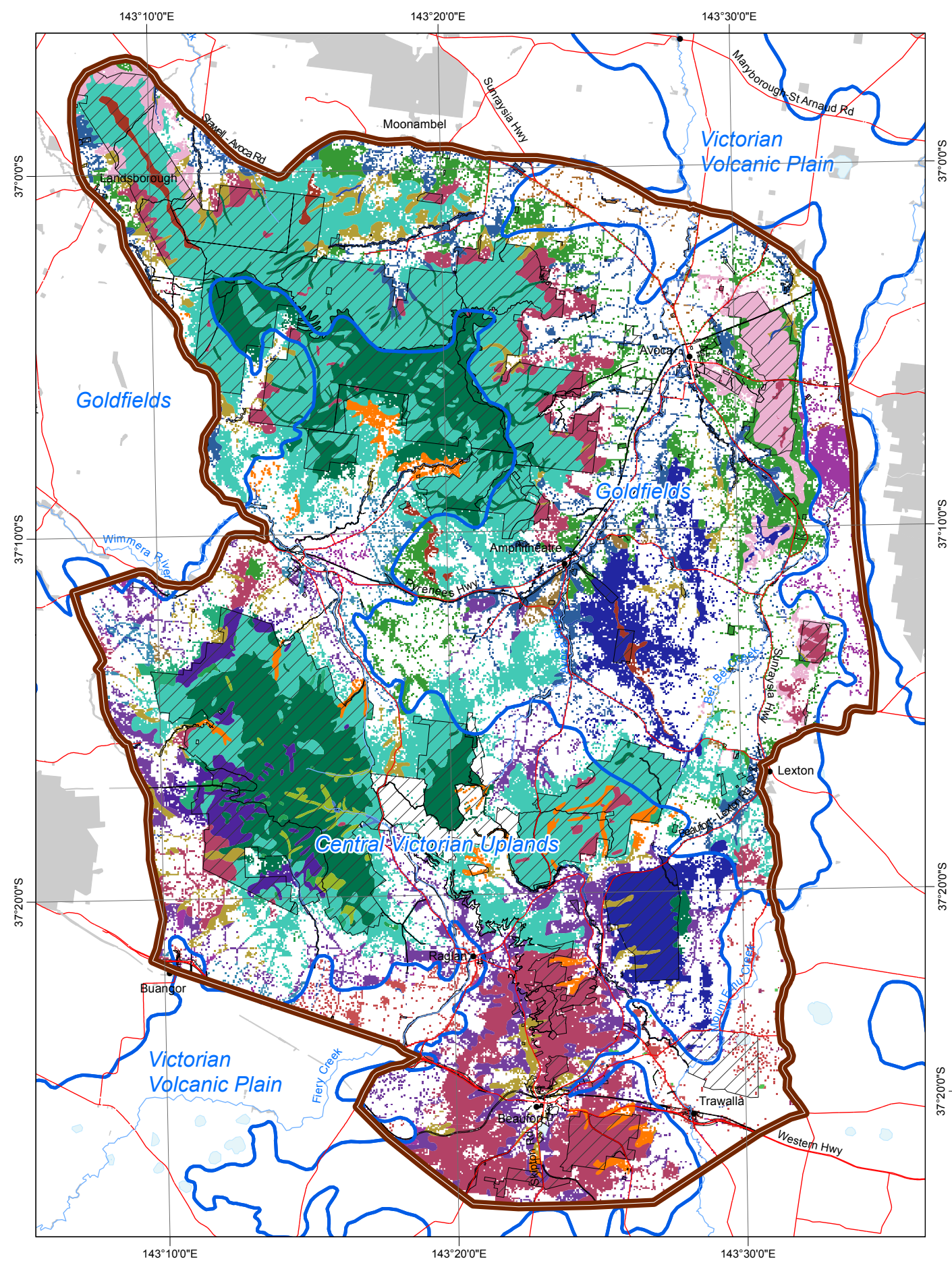


# Map B: Current extent of Ecological Vegetation Classes

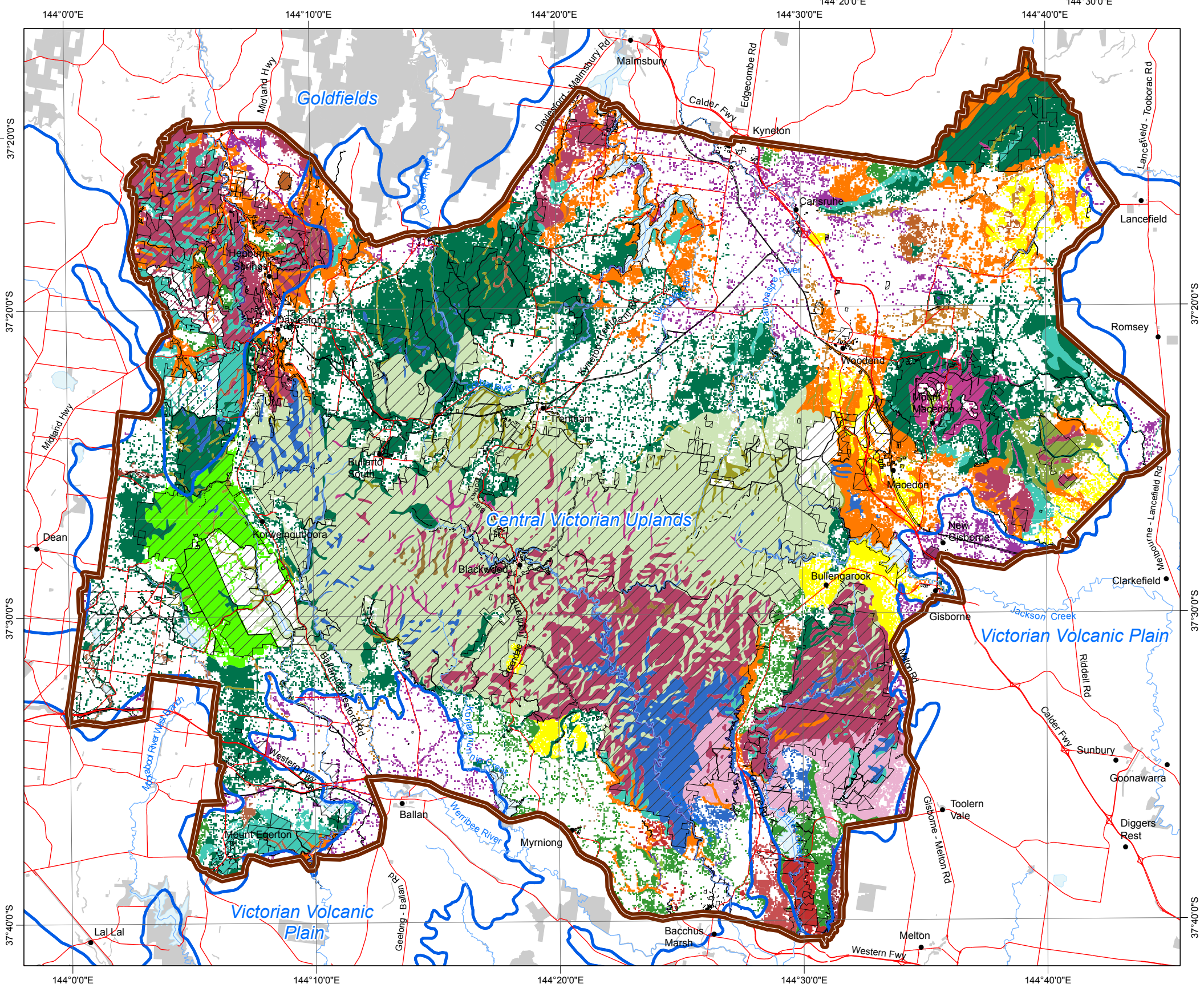
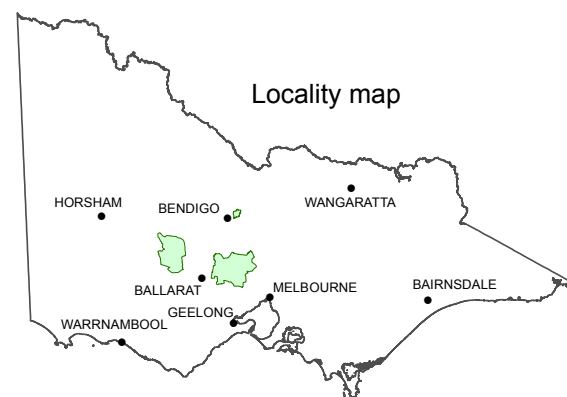
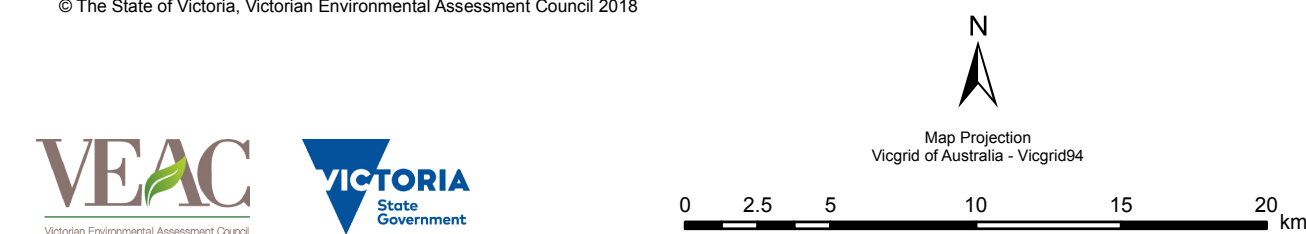


## Notes:

1. This map depicts bioregions, 2010/2015 native vegetation extent, ecological vegetation classes (EVCs), and public land. Apart from waterways and roads, coloured areas show native vegetation extent; areas from which native vegetation has been removed are white.
2. The mapping of native vegetation extent is the product of increasingly refined modelling by the Department of Environment, Land, Water and Planning to interpret high-resolution satellite imagery and a variety of environmental datasets to determine which areas do and do not support native vegetation, categorised into different component types. The mapping presented here is derived from the 2010 modelled extent, modified to include 2015 modelling of grasslands and wetlands to produce the most reliable understanding currently available. Resolution ('pixel' size) is 75 metres by 75 metres.
3. Bioregions are a landscape-scale classification of the environment using a range of features including climate, geology, landform, native vegetation and species information. EVCs are defined by occurrence of plant species, lifeforms, position in the landscape, and a preference for particular environments.
4. Due to the narrow width of some patches of native vegetation in this area, it was not practical to use DELWP's standard statewide colour scheme for EVCs. Instead the colour scheme used on this map enables ready differentiation of EVCs in narrow patches.
5. Small patches (generally less than 0.5 hectare) may not be visible at this scale. A higher resolution map can be viewed at [www.veac.vic.gov.au](http://www.veac.vic.gov.au).

Disclaimer:  
This map may be of assistance to you but the State of Victoria and its employees do not guarantee that the map is without flaw of any kind or is wholly appropriate for your particular purpose and therefore disclaims all liability for any error, loss or any consequence which may arise from you relying on any information on this map.

© The State of Victoria, Victorian Environmental Assessment Council 2018



## Ecological Vegetation Class

- Alluvial Terraces Herb-rich Woodland
- Alluvial Terraces Herb-rich Woodland/Creekline
- Grassy Woodland Mosaic
- Alluvial Terraces Herb-rich Woodland/Plains Grassy Woodland Complex
- Aquatic Herbland/Plains Sedgy Wetland Mosaic
- Box Ironbark Forest
- Creekline Grassy Woodland
- Creekline Herb-rich Woodland
- Damp Forest
- Escarpment Shrubland
- Grassy Dry Forest
- Grassy Dry Forest/Heathy Dry Forest Complex
- Grassy Forest
- Grassy Woodland
- Grassy Woodland/Alluvial Terraces Herb-rich Woodland Mosaic
- Grassy Woodland/Heathy Dry Forest Complex
- Heathy Dry Forest
- Heathy Woodland
- Herb-rich Foothill Forest
- Herb-rich Foothill Forest/Shrubby Foothill Forest Complex
- Hillcrest Herb-rich Woodland
- Hills Herb-rich Woodland
- Lowland Forest
- Montane Grassy Woodland
- Montane Grassy Woodland/Rocky Outcrop Shrubland/Rocky Outcrop Herbland Mosaic
- Plains Grassland
- Plains Grassland/Plains Grassy Woodland Mosaic
- Plains Grassy Wetland
- Plains Grassy Woodland
- Plains Sedgy Wetland
- Plains Woodland
- Plains Woodland/Plains Grassland Mosaic
- Red Gum Swamp
- Riparian Forest
- Riparian Woodland
- Rocky Chenopod Woodland
- Rocky Outcrop Shrubland/Rocky Outcrop Herbland Mosaic
- Rocky Outcrop Shrubland/Rocky Outcrop Herbland/Grassy Dry Forest Complex
- Sandstone Ridge Shrubland
- Scoria Cone Woodland
- Sedgy Riparian Woodland
- Shrubby Dry Forest
- Shrubby Foothill Forest
- Stream Bank Shrubland
- Swamp Scrub
- Swampy Riparian Woodland
- Valley Grassy Forest
- Wet Forest
- Wetland Formation

- Public land
- Public land outside investigation area
- Investigation area boundary
- Major road
- Major waterway or waterbody
- Bioregions boundary
- Goldfields