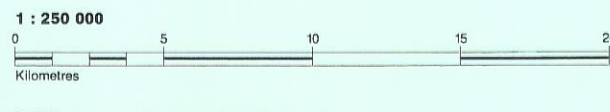


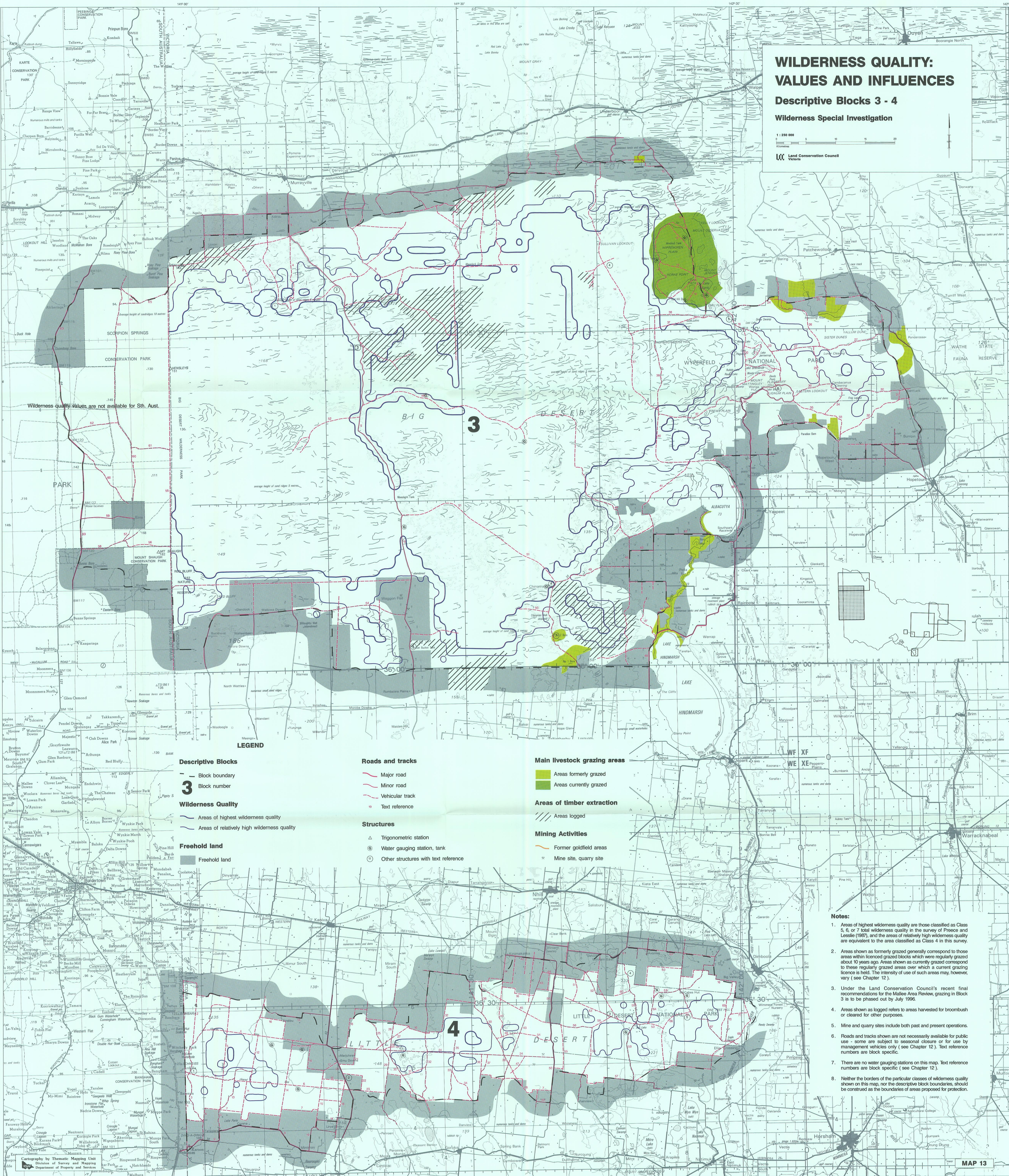
WILDERNESS QUALITY: VALUES AND INFLUENCES

Descriptive Blocks 3 - 4

Wilderness Special Investigation



Land Conservation Council
Victoria



LEGEND

Descriptive Blocks

- Block boundary
- Block number

Wilderness Quality

- Areas of highest wilderness quality
- Areas of relatively high wilderness quality

Freehold land

- Freehold land

Roads and tracks

- Major road
- Minor road
- Vehicular track
- Text reference

Structures

- Trigonometric station
- Water gauging station, tank
- Other structures with text reference

Main livestock grazing areas

- Areas formerly grazed
- Areas currently grazed

Areas of timber extraction

- Areas logged

Mining Activities

- Former goldfield areas
- Mine site, quarry site

Notes:

- Areas of highest wilderness quality are those classified as Class 5, 6, or 7 total wilderness quality in the survey of Precees and Lesslie (1997), and the areas of relatively high wilderness quality are equivalent to the area classified as Class 4 in this survey.
- Areas shown as formerly grazed generally correspond to those areas within licensed grazed blocks which were regularly grazed about 10 years ago. Areas shown as currently grazed correspond to these regularly grazed areas over which a current grazing licence is held. The intensity of use of such areas may, however, vary (see Chapter 12).
- Under the Land Conservation Council's recent final recommendations for the Mallee Area Review, grazing in Block 3 is to be phased out by July 1996.
- Areas shown as logged refers to areas harvested for broombush or cleared for other purposes.
- Mine and quarry sites include both past and present operations.
- Roads and tracks shown are not necessarily available for public use - some are subject to seasonal closure or for use by management vehicles only (see Chapter 12). Text reference numbers are block specific.
- There are no water gauging stations on this map. Text reference numbers are block specific (see Chapter 12).
- Neither the borders of the particular classes of wilderness quality shown on this map, nor the descriptive block boundaries, should be construed as the boundaries of areas proposed for protection.